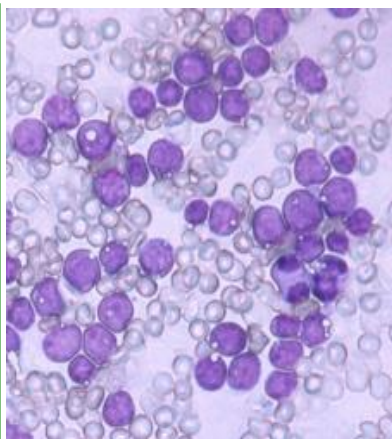


PROMETHEUS



PROMETHEUS

Software for Stem Cells Donor Registries



Introduction to Prometheus
Transplant center

Mechelen, Belgium
February 2013



Steiner Ltd.
www.steiner.cz
www.steinersw.eu
www.hlasoft.com
david@steiner.cz
Prague
Czech Republic

PROMETHEUS

Content

- History of the Prometheus system
- Overview of functions
- Structure of the Prometheus system
- Deployment of the Prometheus system
- Start of the Prometheus application



PROMETHEUS

History of the system

- Developed since 1993 in cooperation with CBMD
- By the end of 90th rewritten to Windows platform
- From 2001 – intensive development for EMDIS, Stemnet
- 2003 – CBMD is first central European registry connected to EMDIS
- from 2003 – Project ESTER
- 2005 – EMDIS IT meeting in Prague
- Senior EMDIS Partner: test node for new EMDIS partners
- from 2006 – cooperation with Slovak registry



PROMETHEUS

Nowadays

- **ESTER is running in half of EMDIS registries (Austria, Netherlands, CRIR, Gift of Life, Norway, Taiwan, Wales, Slovakia, Czech republic, Cyprus, ALF Poland, South Africa), Australia & NZ & TH?**
- **Technology partner of ZKRD, we share programming libraries**
- **2008: Cyprus, Bulgaria, ALF Poland**
- **2009: South Africa**
- **2010: Finland, Sweden (Tobias), NHSBT/BBMR, Slovenia**
- **June 2010: Prometheus User Group meeting in Dublin**
- **2011: Hungary, Denmark, Ezer Mizion, Belgium, Romania, Nigeria**



PROMETHEUS

Nowadays

- **2012: Saudi Arabia, Patras – Greece.**
- **2013 Macedonia, Switzerland.**
- **April 2013 : Prometheus User Group meeting in Brighton UK.**



PROMETHEUS

Main features

- Database of donors (including CBU)
- Database of patients (own, EMDIS, non-EMDIS)
- Interfaces to other systems
- HLA tables – updated automatically (incl. MAC)
- HLACore
- Export to BMDW
- Reports (on screen, print, export to PDF, Excel, Word)
- EMDIS (complete functionality)



PROMETHEUS

Main features

- Import of donors from donor centers
- Analytic tool of patients/donors
- Data Quality Controls
- Access rights of users and user groups
- Access as a Donor Center or Transplant center

Data audit - monitoring of all changes in the database



PROMETHEUS

Today's goal

- **Explain the technical background of Prometheus**
- **Go through the program's features and explain them**
- **Donor and Patient management**
- **EMDIS and EMDIS tools**



PROMETHEUS

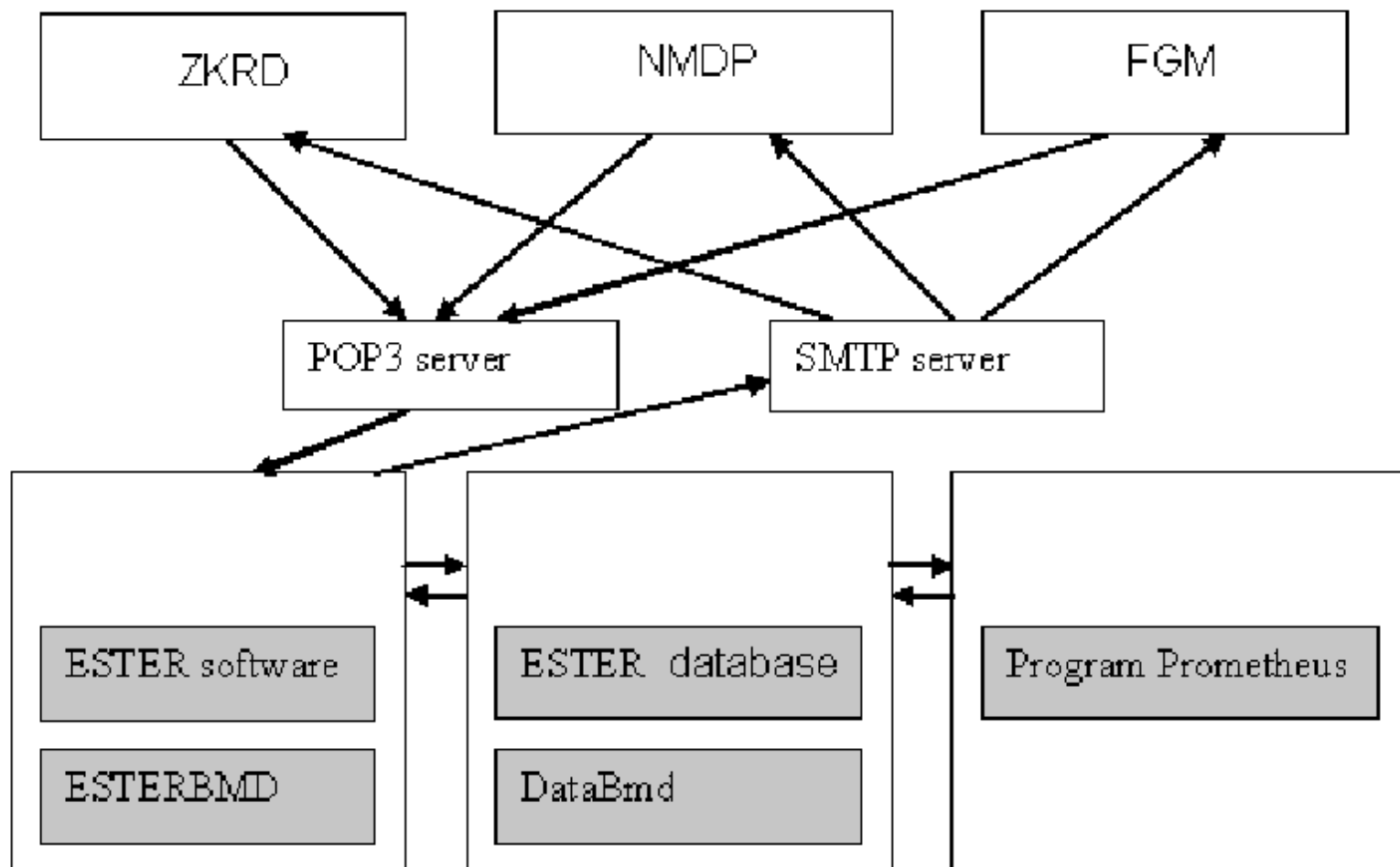
Basic terms

- **Donor** – we will understand under the term a haematopoietic stem cells donor. So the donor is either „marrow donor“ or „cord blood unit“.
- **Local donor** – a local donor of haematopoietic stem cells donors registry.
- **Foreign donor** – a donor of foreign haematopoietic stem cells donors registry (e.g. NMDP).
- **CBU** – Cord Blood unit.
- **MD** – Adult (Marrow) Donor.
- **Local patient** – a patient of local haematopoietic stem cells donors registry.
- **Foreign patient** – a patient of foreign haematopoietic stem cells donors registry (e.g. NMDP).
- **EMDIS** – European Marrow Donor Information System
- **BMDW** – Bone Marrow Donors Worldwide



PROMETHEUS

Structure of the Prometheus system

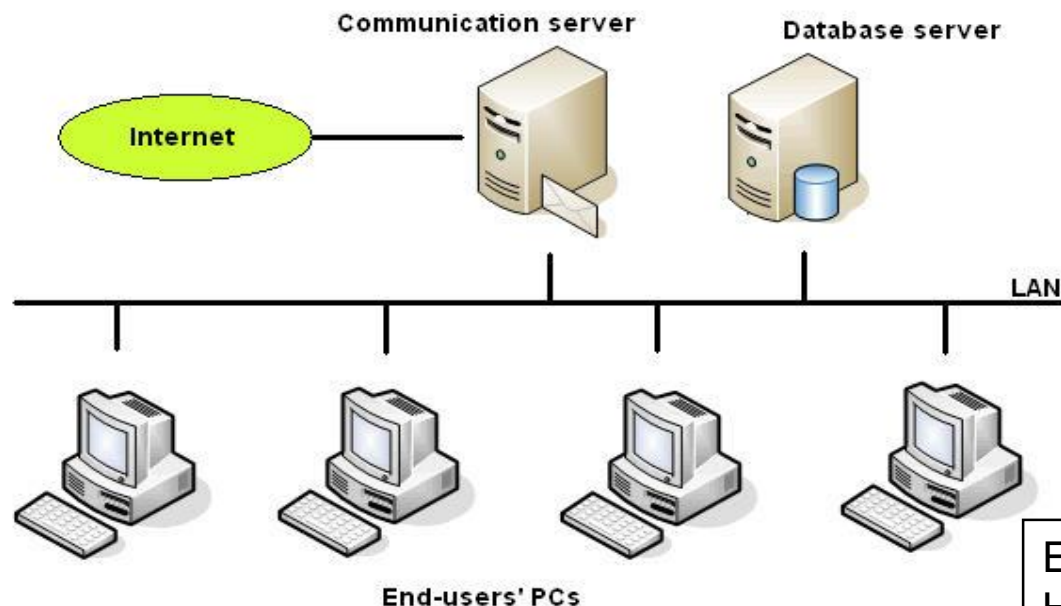


PROMETHEUS

Deployment Diagram

ESTER software
EMDIS search engine
HLA & software update
Interfaces
Quality Control
HLAcore

ESTER databases
DataBmd database
DistSW database
ValsBmd database
HLAcore database



End-user application
HLAcore
BmdUpdate

PROMETHEUS

Software distribution

ftp.steinersw.eu

- Software

www.bmdw.org

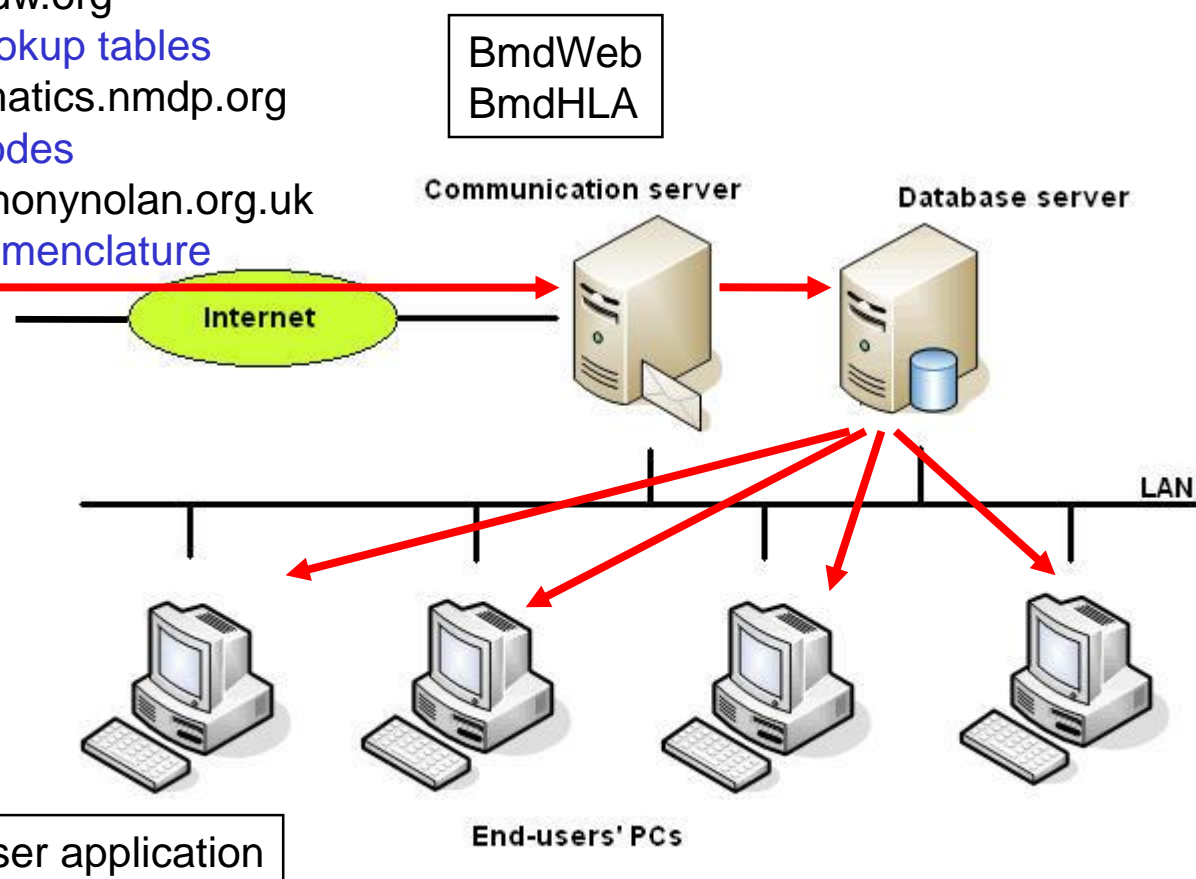
- HLA Lookup tables

Bioinformatics.nmdp.org

- MAC codes

www.anthonynolan.org.uk

- HLA Nomenclature



QMS

ISO 9001:08

ISMS

ISO 27001:05

tayllorcox.com

tayllorcox.com

Steiner Ltd.

www.steiner.cz

www.steinersw.eu

www.hlasoft.com

david@steiner.cz

Prague

Czech Republic

PROMETHEUS

End user point of view



PROMETHEUS

Program start

- Every user has a unique user id
- *UserID space password*
- I.e. “23 shoe”
- 3 attempts to enter the right password
- Locked account
- Each user must use own user account!
- Default password is the same as UserID
- I.e. “23 23”



PROMETHEUS

Change your password

- When you log on for the first time
- If you want to change your password
- Password are in format
“23 shoe”

UserID space password



Change password

Old password

New password

Retype new password

✓ ✗

PROMETHEUS

User access rights

The system distinguishes between several types of users:

- Registry – the super users
- Donor Centers – limited to working with donors and donor related management.
- Transplant centers – limited to working with patients and patient related tasks.

Every user is assigned to his/her relevant institute.

User may be assigned several institutes.

A user may be logged in only as one user type at one time.



PROMETHEUS

Update of local code lists

- From server to local PC
- ZIP codes
- Diagnoses
- HLA codes
- MAC codes
- BMDW registries

If any code seems to be missing, contact admins

